

MJ N-Channel Enhancement Mode Power MOSFET

Description

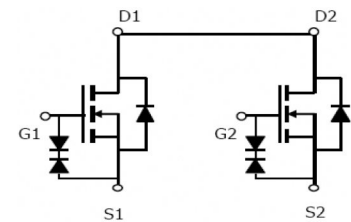
The MJ8804 uses advanced trench technology to provide excellent $R_{DS(ON)}$, low gate charge and operation with gate voltages as low as 2.5V. This device is suitable for use as a Battery protection or in other Switching application.

General Features

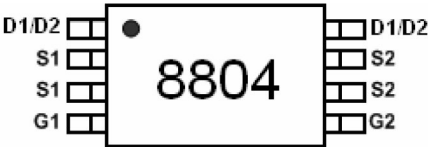
- ◆ $V_{DS} = 20V, I_D = 8A$
 $R_{DS(ON)} < 19m\Omega @ V_{GS} = 2.5V$
 $R_{DS(ON)} < 15m\Omega @ V_{GS} = 4.5V$
ESD Rating: 2000V HBM
- ◆ High power and current handing capability
- ◆ Lead free product is acquired
- ◆ Surface Mount Package

Application

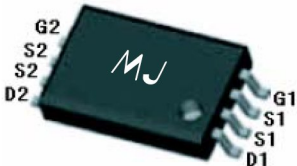
- ◆ Uni-directional load switch
- ◆ Bi-directional load switch



Schematic diagram



Marking and pin Assignment



TSSOP-8 top view

Package Marking and Ordering Information

Device Marking	Device	Device Package	Reel Size	Tape width	Quantity
8804	MJ8804	TSSOP-8	Ø330mm	12mm	3000 units

Absolute Maximum Ratings (Tc =25 °Cunless otherwise noted)

Parameter	Symbol	Limit	Unit
Drain-Source Voltage	V_{DS}	20	V
Gate-Source Voltage	V_{GS}	± 12	V
Drain Current-Continuous	I_D	8	A
Pulsed Drain Current ^(Note 1)	I_{DM}	30	A
Maximum Power Dissipation	P_D	2	W
Operating Junction and Storage Temperature Range	T_J, T_{STG}	-55 To 150	°C

Thermal Characteristic

Thermal Resistance,Junction-to-Ambient ^(Note 2)	$R_{\theta JA}$	62.5	°C/W
--	-----------------	------	------

Electrical Characteristics (T_A =25℃unless otherwise noted)

Parameter	Symbol	Condition	Min	Typ	Max	Unit
Off Characteristics						
Drain-Source Breakdown Voltage	BV _{DSS}	V _{GS} =0V I _D =250μA	20			V
Zero Gate Voltage Drain Current	I _{DSS}	V _{DS} =20V,V _{GS} =0V	-	-	1	μA
Gate-Body Leakage Current	I _{GSS}	V _{DS} =±10V,V _{DS} =0V	-	-	±10	nA
On Characteristics ^(Note 3)						
Gate Threshold Voltage	V _{GS(th)}	V _{DS} =V _{GS} ,I _D =250μA	0.45	0.7	1.0	V
Drain-Source On-State Resistance	R _{DS(ON)}	V _{GS} =4.5V, I _D =5A	-	11	15	mΩ
		V _{GS} =2.5V, I _D =4A	-	15	19	mΩ
Forward Transconductance	g _{FS}	V _{DS} =5V,I _D =5A	-	15	-	S
Dynamic Characteristics ^(Note 4)						
Input Capacitance	C _{iss}	V _{DS} =10V,V _{GS} =0V, F=1.0MHz	-	1800	-	PF
Output Capacitance	C _{OSS}		-	230	-	PF
Reverse Transfer Capacitance	C _{rss}		-	200	-	PF
Switching Characteristics ^(Note 4)						
Turn-on Delay Time	t _{d(on)}	V _{DD} =10V,R _L =1.2Ω V _{GS} =10V,R _{GEN} =3Ω	-	2.5		nS
Turn-on Rise Time	t _r		-	7.2		nS
Turn-Off Delay Time	t _{d(off)}		-	49		nS
Turn-Off Fall Time	t _f		-	10.8		nS
Total Gate Charge	Q _g	V _{DS} =10V,I _D =8A, V _{GS} =4.5V	-	17.9		nC
Gate-Source Charge	Q _{gs}		-	1.5	-	nC
Gate-Drain Charge	Q _{gd}		-	4.7	-	nC
Drain-Source Diode Characteristics						
Diode Forward Voltage ^(Note 3)	V _{SD}	V _{GS} =0V,I _S =8A	-	-	1.2	V
Diode Forward Current ^(Note 2)	I _S		-	-	8	A

Notes:

- ① Repetitive Rating: Pulse width limited by maximum junction temperature.
② Surface Mounted on FR4 Board, t ≤ 10 sec.
③ Pulse Test: Pulse Width ≤ 300μs, Duty Cycle ≤ 2%.
④ Guaranteed by design, not subject to production

Typical Electrical and Thermal Characteristics

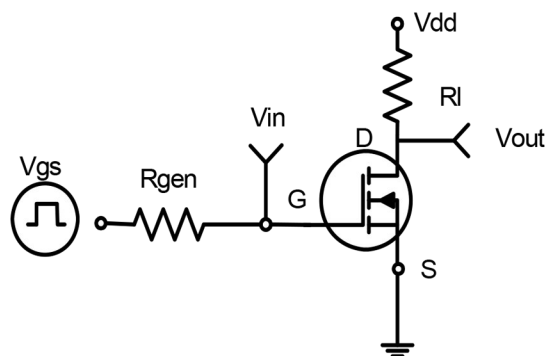


Figure 1 Switching Test Circuit

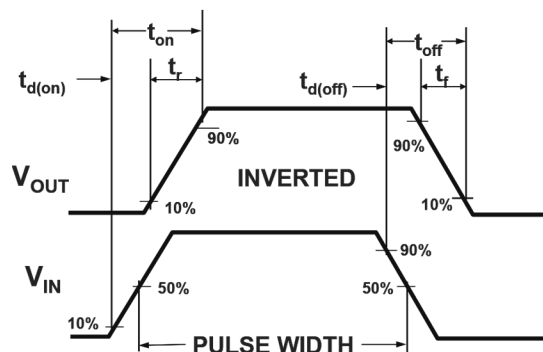
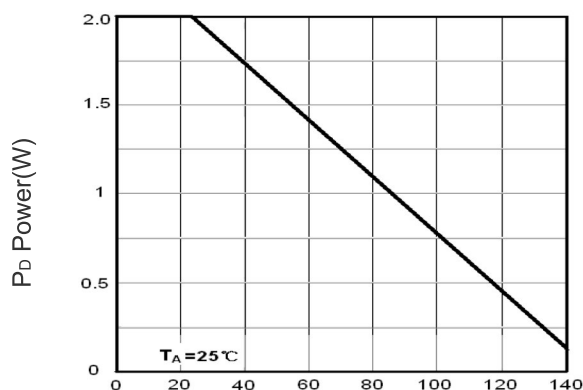
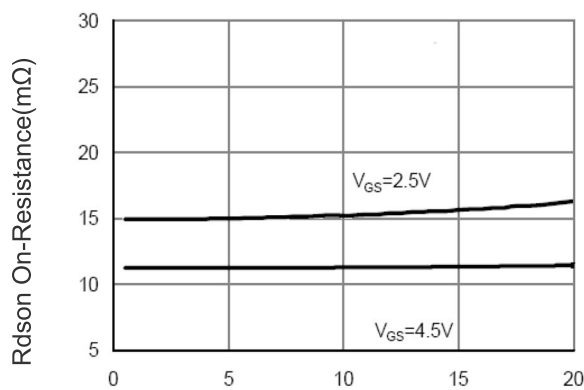


Figure 2 Switching Waveforms



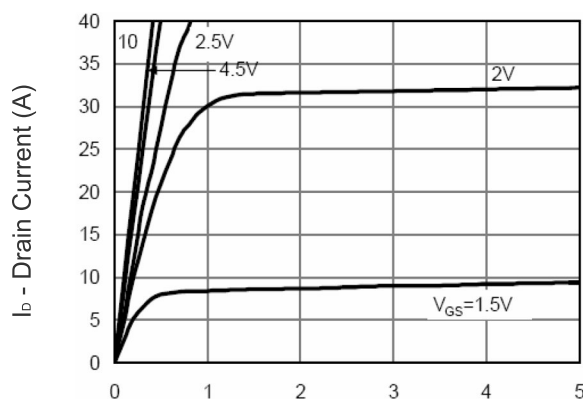
TJ - Junction Temperature(°C)

Figure 3 Power Dissipation



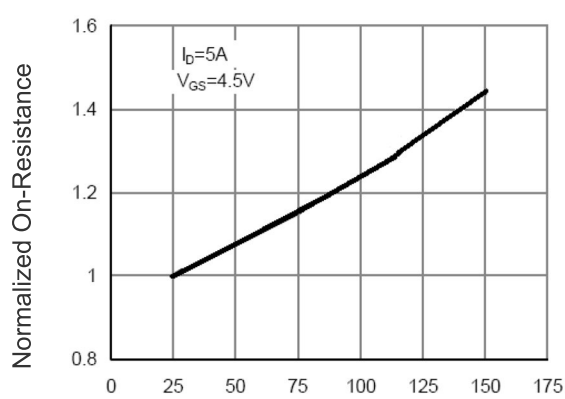
ID - Drain Current (A)

Figure 4 Drain-Source On-Resistance



Vds Drain-Source Voltage (V)

Figure 5 Output Characteristics



TJ - Junction Temperature(°C)

Figure 6 Drain-Source On-Resistance

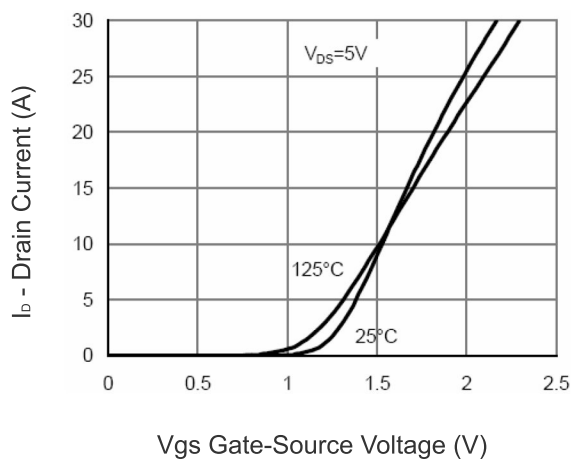


Figure 7 Transfer Characteristics

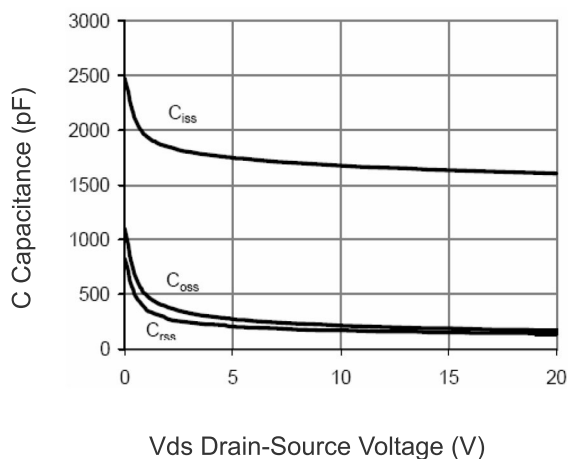


Figure 8 Capacitance vs Vds

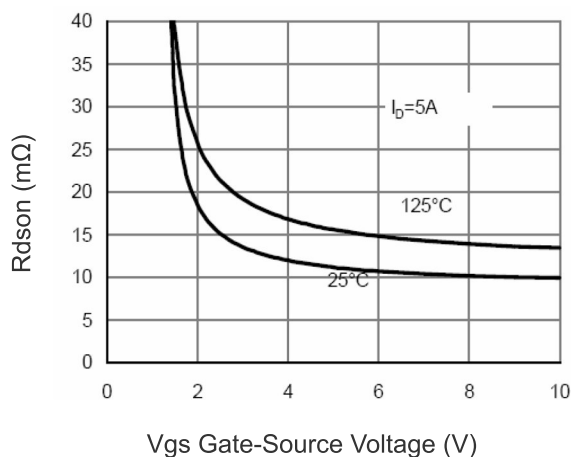


Figure 9 Rdson vs Vgs

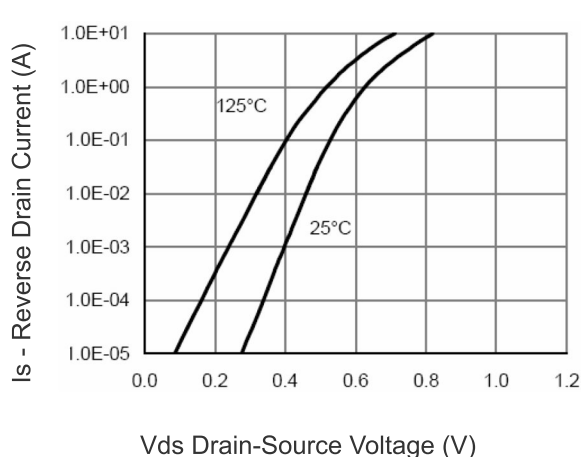


Figure 10 Source-Drain Diode Forward

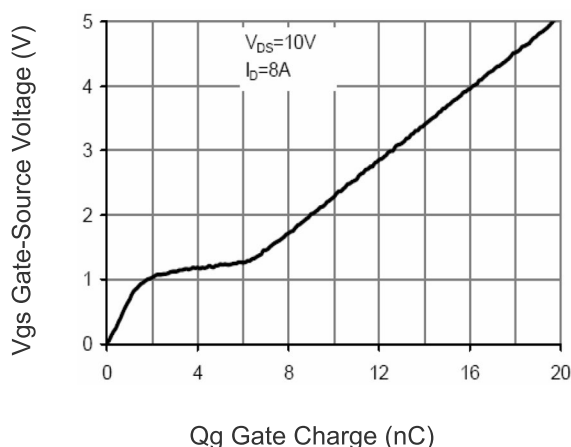


Figure 11 Gate Charge

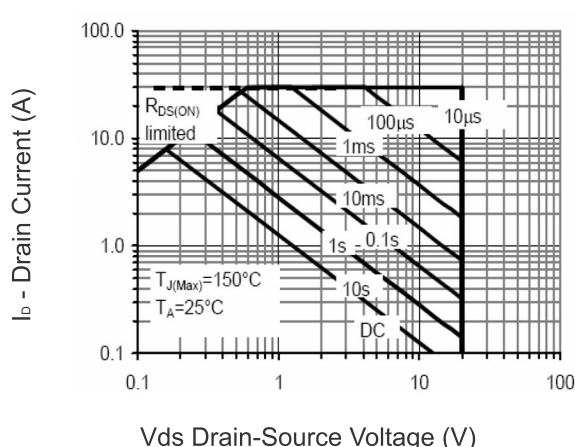


Figure 12 Safe Operation Area

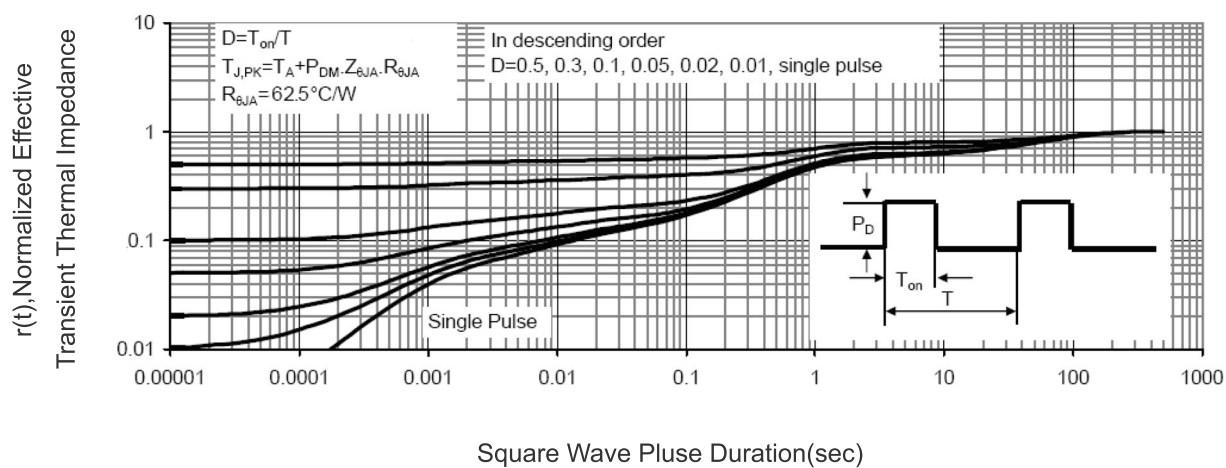
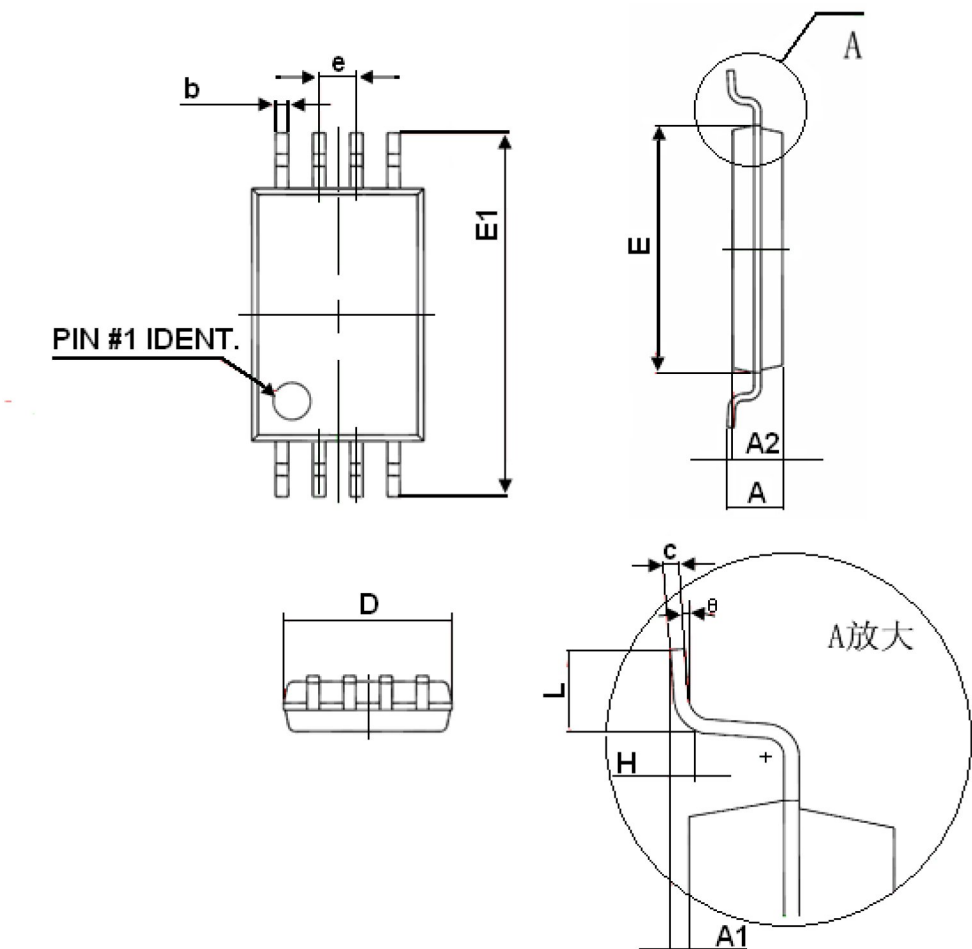


Figure 13 Normalized Maximum Transient Thermal Impedance

Tssop-8 Package Information



Symbol	Dimensions In Millimeters	
	Min	Max
D	2.900	3.100
E	4.300	4.500
b	0.190	0.300
c	0.090	0.200
E1	6.250	6.550
A		1.100
A2	0.800	1.000
A1	0.020	0.150
e	0.65(BSC)	
L	0.500	0.700
H	0.25(TYP)	
θ	1°	7°

Attention:

Any and all MJ power products described or contained herein do not have specifications that can handle applications that require extremely high levels of reliability, such as life-support systems, aircraft's control systems, or other applications whose failure can be reasonably expected to result in serious physical and/or material damage. Consult with your MJ power representative nearest you before using any MJ power products described or contained herein in such applications.

MJ power assumes no responsibility for equipment failures that result from using products at values that exceed, even momentarily, rated values (such as maximum ratings, operating condition ranges, or other parameters) listed in products specifications of any and all MJ power products described or contained herein.

Specifications of any and all MJ power products described or contained herein stipulate the performance, characteristics, and functions of the described products in the independent state, and are not guarantees of the performance, characteristics, and functions of the described products as mounted in the customer's products or equipment. To verify symptoms and states that cannot be evaluated in an independent device, the customer should always evaluate and test devices mounted in the customer's products or equipment.

MJ power Semiconductor CO.,LTD. strives to supply high-quality high-reliability products. However, any and all semiconductor products fail with some probability. It is possible that these probabilistic failures could give rise to accidents or events that could endanger human lives, that could give rise to smoke or fire, or that could cause damage to other property. When designing equipment, adopt safety measures so that these kinds of accidents or events cannot occur. Such measures include but are not limited to protective circuits and error prevention circuits for safe design, redundant design, and structural design.

In the event that any or all MJ power products(including technical data, services) described or contained herein are controlled under any of applicable local export control laws and regulations, such products must not be exported without obtaining the export license from the authorities concerned in accordance with the above law.

No part of this publication may be reproduced or transmitted in any form or by any means, electronic or mechanical, including photocopying and recording, or any information storage or retrieval system, or otherwise, without the prior written permission of MJ power Semiconductor CO.,LTD.

Information (including circuit diagrams and circuit parameters) herein is for example only ; it is not guaranteed for volume production. MJ power believes information herein is accurate and reliable, but no guarantees are made or implied regarding its use or any infringements of intellectual property rights or other rights of third parties.

Any and all information described or contained herein are subject to change without notice due to product/technology improvement, etc. When designing equipment, refer to the "Delivery Specification" for the MJ power product that you intend to use.

This catalog provides information as of Sep.2010. Specifications and information herein are subject to change without notice.